

the Athy heritage-centre museum presents the

15th
Ernest
Shackleton
Autumn School

Lectures - Exhibition - Film - Music - Excursion

23rd-26th oct
2015





Sir Ernest Shackleton

Born close to the village of Kilkea, between Castledermot and Athy, in the south of County Kildare in 1874, Ernest Shackleton is renowned for his courage, his commitment to the welfare of his comrades, and his immense contribution to exploration and geographical discovery. The Shackleton family first came to south Kildare in the early years of the eighteenth century. Ernest's Quaker forefather, Abraham Shackleton, established a multi-denominational school in the village of Ballitore. This school was to educate such notable figures as Napper Tandy, Edmund Burke, Cardinal Paul Cullen and Shackleton's great aunt, the Quaker writer, Mary Leadbeater. Apart from their involvement in education, the extended family was also deeply involved in the business and farming life of south Kildare.

Having gone to sea as a teenager, Shackleton joined Captain Scott's Discovery expedition (1901 – 1904) and, in time, was to lead three of his own expeditions to the Antarctic. His Endurance expedition (1914 – 1916) has become known as one of the great epics of human survival. He died in 1922, at South Georgia, on his fourth expedition to the Antarctic, and – on his wife's instructions – was buried there.

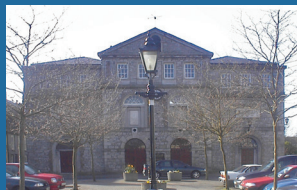
Athy Heritage Centre-Museum

Athy Heritage Centre-Museum was established to celebrate the history of the area. It houses material and audio-visual programmes that chronicle the ancient, medieval and post 16th century lives and achievements of the people of the town and its hinterland.

Athy Heritage Centre is home to the only permanent exhibition anywhere devoted to Ernest Shackleton. Highlights include an original sledge and harness from his Antarctic expeditions, a 15-foot model of Shackleton's ship Endurance, an exhibition of unique Shackleton family photographs and an audio-visual display featuring Frank Hurley's film footage of the Endurance expedition.

The Centre also houses material on the Great War and its effects on Athy; and the Gordon-Bennett race, which is celebrated annually in the town.

Highlight of the year, at the Centre, is the Shackleton Autumn School, the only Polar School in Ireland, which was established to commemorate the explorer in the county of his birth. It provides a forum for discussion and debate on polar exploration and the presentation of artistic works relevant to Shackleton and his time.



Friday 23rd October

7.30pm

Official Opening and Exhibition Launch by the:

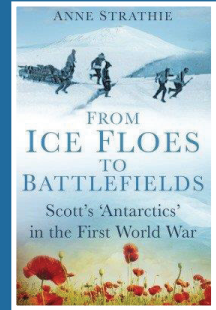
Hon. Alexandra Shackleton

Book Launch

8.00pm

Athy Heritage Centre - Museum

In association with the History Press the school is delighted to host the launch of *From Ice Floes to Battlefields: Scott's 'Antarctics' in the First World War* by Anne Strathie. *From Ice Floes to Battlefields* draws on previously unpublished journals, letters and other archive material to throw new light on the *Terra Nova* expedition and on 'what happened next' to Scott's 'Antarctics', men who had taken part in Scott's 1910-13 *Terra Nova* expedition and, in several cases, in Shackleton's *Nimrod and Endurance* expeditions.



Daily Exhibitions

Saturday & Sunday 10.00am - 5.00pm

Athy Heritage Centre - Museum

Bank Holiday Monday 10.00am - 2.00pm

“Life on the Line”

LIFE ON THE LINE celebrates the variety of existence in the circumpolar Arctic, in the face of overwhelming environmental and cultural change. Over a number of years, photographer Cristian Barnett has journeyed to the Arctic Circle, an invisible line of latitude 66 degrees and 33 minutes north of the Equator. The line intersects eight countries and is home to a rich diversity of peoples for whom the sun never sets in high summer, nor rises in deepest winter. This exhibition is drawn from his book *Life on the Line*, recently published by Polarworld and on sale in the Museum shop. All the photographs were taken on film within thirty-five miles of the Arctic Circle.



SATURDAY 24th October

Lecture Series

Athy Library

- 10.00am** "Shackleton's Crossing of Antarctica – Could he have done it?"
Robert Burton Admission €10
- 10.50am** TEA/COFFEE
- 11.20** "Captain Scott, The Modern Traveller"
Dr Phillip Sidney Admission €10
- 12.10** "Lessons from a Polar Explorer about Success"
Dr Jesús Alcoba Admission €10
- 1.00pm** LUNCH
- 2.30pm** "Survival and Sacrifice in Mars Exploration - What we know from Polar Expeditions"
Dr Erik Seedhouse Admission €10
- 3.30pm** "Scurvy and Polar Exploration"
Dr Kevin McKenna Admission €10
- 4.30pm** 'Icebreakers'
A series of short presentations on topics relevant to the Shackleton Autumn School, presented by those with a passion for their subject. Admission Free

Dinner

Clanard Court Hotel, Athy

- 8.00pm** Autumn School Dinner Tickets €40

SUNDAY 25th October

Lecture Series

Athy Library

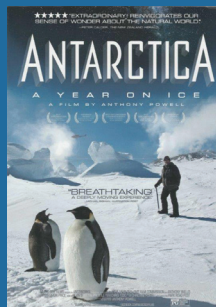
- 10.00am** "Penguin legs are good cold" - notes from the Scott Polar Archives"
Naomi Boneham Admission €10
- 10.50am** TEA/COFFEE
- 11.20am** "Wintering over in Antarctica - 15 months at the French station Dumont d'Urville"
Samuel Blanc Admission €10
- 12.10pm** "Over by Christmas? Back by 1915? New worlds for Scott's and Shackleton's men."
Anne Strathie Admission €10
- 1.00pm** LUNCH

Film

2.30pm

Antarctica – A Year On Ice

Antarctica: A Year On Ice is a visually stunning film that lets you experience what it is like to live in Antarctica for a full year, including winters isolated from the rest of the world, while enduring months of darkness in the harshest place on Earth. Anthony Powell has been working in Antarctica with his wife Christine for many years. After over 10 years of filming, his documentary is now complete. Anthony has had his work appear in numerous films, exhibits and TV shows. He most recently featured in the Emmy Award-winning BBC series, The Frozen Planet.



Admission €10

Athy Library

Lecture Series

4.30pm

Open Forum – Chaired by Bob Headland

Athy Library

Admission Free

Cultural Evening - Music

8.00pm

Shackleton's Endurance

"Shackleton's Endurance" is a widely acclaimed re-telling of the story of Ernest Shackleton's 1914 Trans-Antarctic Expedition. Craig Blackwell's visuals, Brian Hughes' composition and John MacKenna's narrative capture the emotions underlying this epic tale, from the optimism of departure through shipwrecked desolation, and finally the euphoria of rescue. The performers will be joined onstage by Kildare County Orchestra, Monasterevin Gospel Choir and invited musicians.

Commissioned by Athy Heritage Centre-Museum with support from Kildare County Council's Arts and Library Services, the performance premiered in GBS Theatre Carlow as part of the 2014 Shackleton Autumn School. Composer and Athy resident Brian Hughes has seized on the recent availability of a suitable venue to fulfill his ambition of staging "Shackleton's Endurance" in his and Shackleton's home locality.

Admission €15

Athy Dominican Church

MONDAY 26th October

Field Trip

10.00am

Bus tour through Shackleton country

A Visit to Ballitore and the home of Mary Leadbeater, writer and ancestor of Ernest Shackleton and Quaker Meeting House.

Assemble at the Heritage Centre - Museum

Fare €10

INFORMATION ON CONTRIBUTORS

Hon. Alexandra Shackleton

Alexandra is the only granddaughter of Ernest Shackleton. She speaks, writes and broadcasts on the subject of Shackleton and has been instrumental in furthering Shackleton historical research. She is the patron of several polar expeditions and is President of the James Caird Society.

Cristian Barnett

Cristian is a professional photographer with over 15 years experience working with many of the best cookery book publishers and magazines as well as restaurants, hotels and other commercial clients. His recent book titles include Tom Kerridge's *Best Ever Dishes* and Hope and Greenwood's *Sweets Made Simple*. Magazine work includes *Country Living*, *Saga* and *House and Garden*. His long-term project *Life on the Line*, a series of portraits shot along the Arctic circle, was published in September 2014.

Robert Burton

Robert Burton is a natural history writer who has been involved with South Georgia for many years. He visited the island for the first time in 1964 and returned in 1971 to study albatrosses and fur seals. From 1995 to 1998, he was director of the museum at Grytviken and started to collect information on the island's history. This included researching the time that Shackleton spent on South Georgia. Bob now visits annually as a lecturer on cruise ships.

Dr Phillip Sidney

Philip Sidney is a freelance writer and researcher, currently at work on a literary history of Scott's last expedition. He completed his PhD Thesis, *Scott's Last Expedition and the Literature of Cold*, at the University of Cambridge in late 2013. Philip has presented on polar topics at gatherings and conferences from Hobart to Oban; his writing has appeared in *Polar Record*, *Critical Quarterly*, *Church Times* and *The Junket*. He was a shortlisted candidate for the International Scott Centenary Expedition 2012.

Dr Jesús Alcoba

Jesús Alcoba MSc, MBA, PhD is the Dean of La Salle International Graduate School of Business, Madrid, Spain. He has authored several scientific papers and books. His latest one is *La Brújula de Shackleton (Shackleton's Compass)*, a book that combines his research in personal success with the legendary Endurance expedition that was acclaimed as one of the best 2014 business books in Spain. He is the author of ernestshackleton.es, a website that narrates the Endurance expedition following Shackleton's "South", and he has travelled to Antarctica to retrace some of its more breathtaking passages.

Dr Erik Seedhouse

Erik Seedhouse is a Norwegian-Canadian suborbital astronaut. After military service Erik pursued his Ph.D. at the German Space Agency's Institute for Space Medicine. He found time to win Ultraman Hawaii and the European Ultra-man Championships as well as completing the Race Across America bike race. Erik won the World Endurance Triathlon

Championships in 1995 and 1996, the World Double Ironman Championships in 1995 and the infamous Decatriathlon, an event requiring competitors to swim 38km, cycle 1800km, and run 422km. Non-stop. In 1997 GQ magazine nominated him as the 'Fittest Man in the World'. Erik works as an astronaut instructor, professional speaker, triathlon coach and author.

Dr Kevin McKenna

Dr Kevin McKenna was born in Belfast. He trained at Queen's University Belfast and Harvard Medical School, Boston. He is currently a consultant at the Belfast City Hospital. He has a life long interest in history and polar exploration. He is married to Gail and has five children.

Naomi Boneham

Naomi is the Archivist at the Scott Polar Research Institute, Cambridge. After studying mainly European history at University Naomi moved on to much more local records working in County Archives both before and after qualifying as an Archivist. In 2006 she switched from estate records to the frozen world of Arctic and Antarctic exploration. The SPRI Archives have provided an opportunity to combine her interest in cataloguing theory with the ability to remain in daily contact with researchers.

Samuel Blanc

Samuel Blanc was born in the Chartreuse mountain range in the heights of Grenoble in Isère, France. It was there that his passion for nature in general and for fauna in particular was born. Manager of projects targeting public schools, adults or students, he has led conferences, headed naturalist visits, and participated in audiovisual shows. After this he spent fifteen months in Adélie Land in Antarctica, on behalf of the CNRS and of the French Polar Institute in the framework of a research program on biology and ecology. On site, he was responsible for the study and monitoring of populations of birds and of marine mammals.

Anne Strathie

Anne Strathie was born and educated in Scotland and now lives in Cheltenham, Gloucestershire. Before embarking on researching and writing *Birdie Bowers: Captain Scott's Marvel*, she worked in business and the arts and heritage sector, including at Cheltenham's Wilson Art Gallery & Museum. In the course of her research for *Birdie Bowers* and *From Ice Floes to Battlefields*, she travelled to New Zealand, Antarctica (Ross Sea) and World War One sites; she has given talks and taken part in events in Britain and New Zealand.

Bob Headland

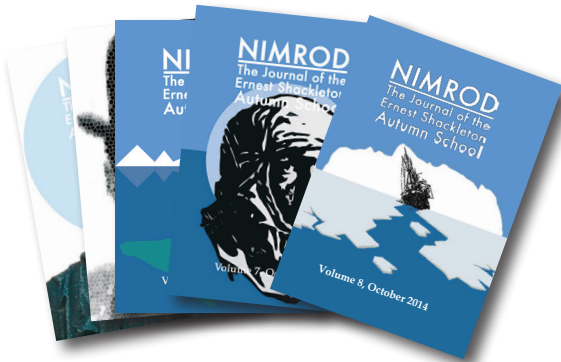
Bob is a senior research associate of the Scott Polar Research Institute of the University of Cambridge. He specialises in the history and geography of both polar regions. His work with the Antarctic Heritage Trust involves the preservation of the historical huts and other aspects associated with the exploration of the discovery of the Antarctic. His most recent publication is *A Chronology of Antarctic Exploration*.



Mary Leadbeater's House in Ballitore part of the Field trip on Monday.



Scale model of the Endurance in Athy Heritage Centre - Museum



“Nimrod” Vol 9

will be on sale with back issues of
Volumes 1, 2, 3, 4, 5, 6, 7 & 8

The Ernest Shackleton Autumn School

is a project of Athy Heritage Centre - Museum.

For information and booking contact:

Athy Heritage Centre - Museum,

and Tourist Information Point,

Town Hall, Emily Square, Athy, Co. Kildare.

Tel: 059 - 8633075. Fax: 059 - 8633076.

Email: athyheritage@eircom.net

Websites: www.athyheritagecentre-museum.ie, www.shackletonmuseum.com

ALL EVENTS INCLUSIVE FEE

Full Autumn School: €150

Lectures: €10, student/unwaged/OAP: €8



Athy International
Concentrates

The Heritage Centre - Museum and its Shackleton School team would like to thank our funding bodies and sponsors whose support makes this event possible.

These include Athy International Concentrates,
Kildare County Library Service and Kildare County Council.



Kildare County
Council